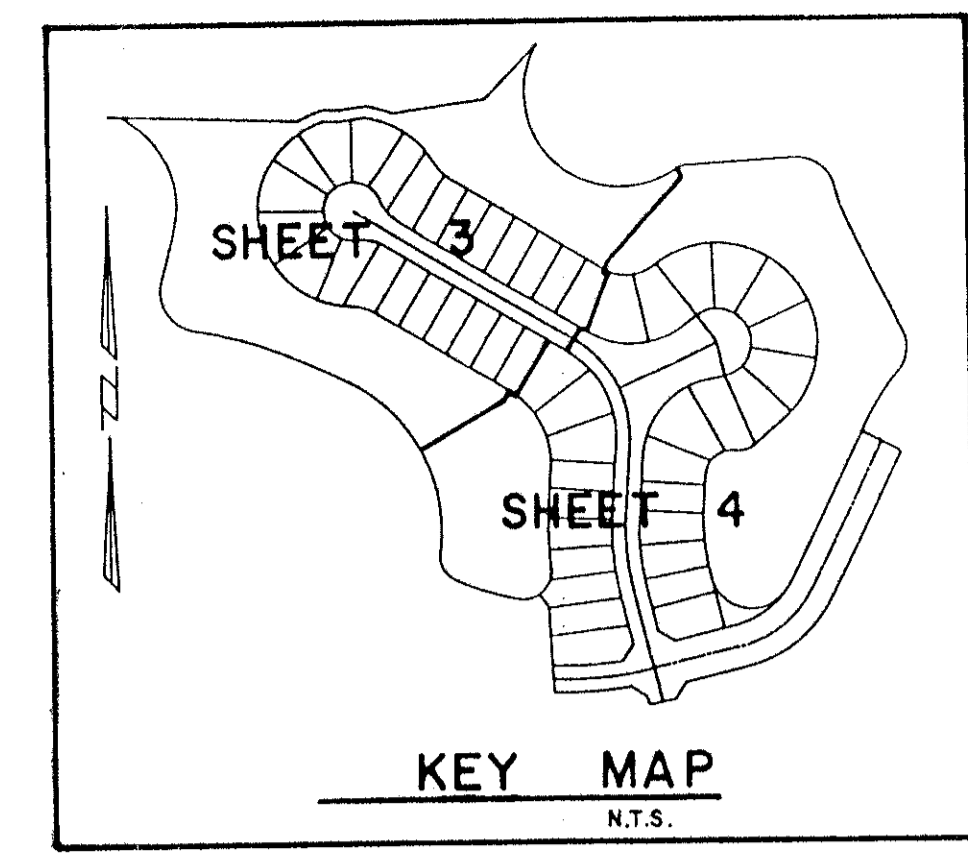


ABERDEEN-PLAT NO. 16

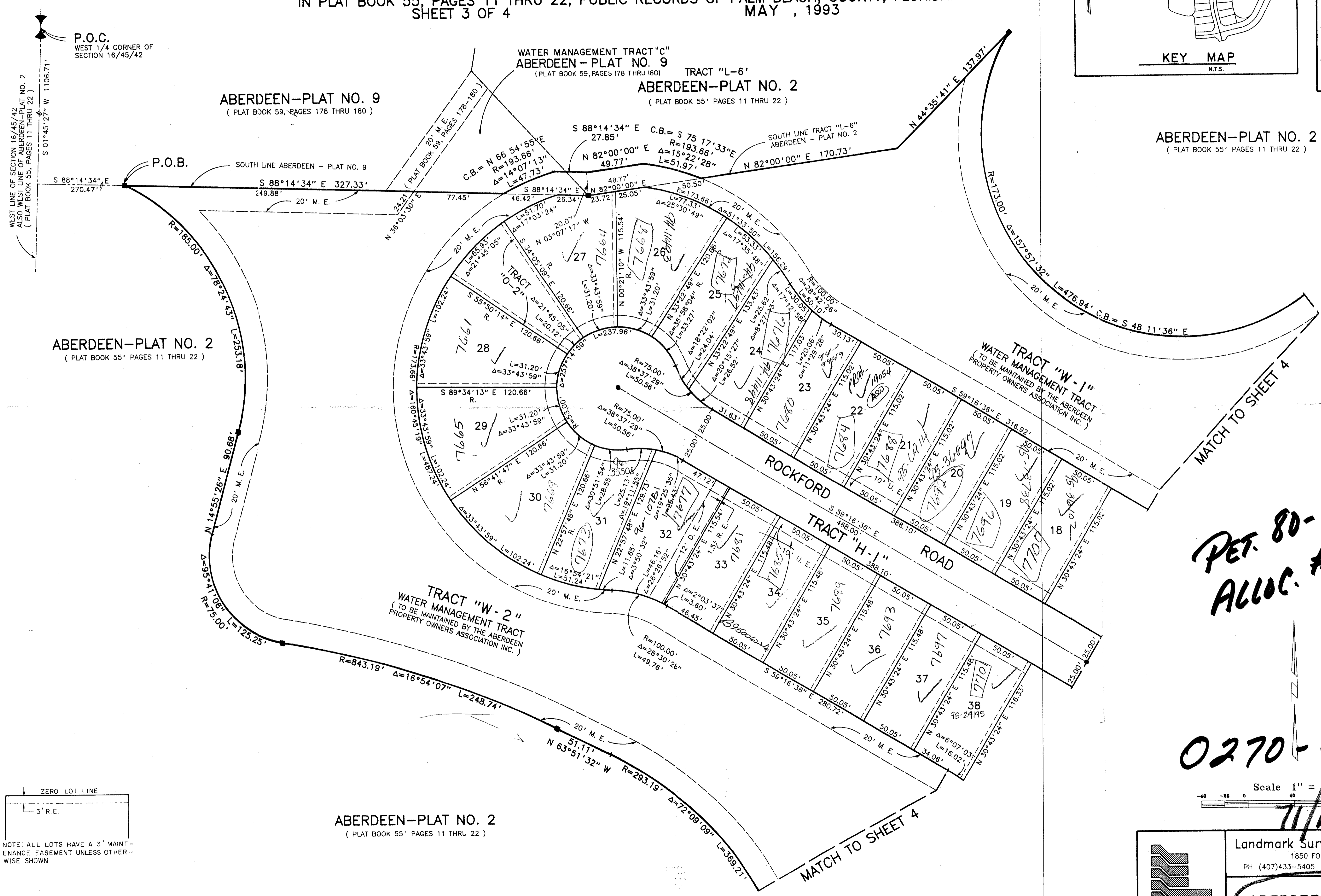
A PORTION OF A P.U.D.
 LYING IN SECTION 16, TOWNSHIP 45 SOUTH, RANGE 42 EAST
 BEING A REPLAT OF A PORTION OF ABERDEEN - PLAT NO. 9 AS RECORDED IN PLAT BOOK 59,
 PAGES 178 THRU 180 AND A REPLAT OF A PORTION OF ABERDEEN - PLAT NO. 2 AS RECORDED
 IN PLAT BOOK 55, PAGES 11 THRU 22, PUBLIC RECORDS OF PALM BEACH, COUNTY, FLORIDA.
 SHEET 3 OF 4
 MAY, 1993

0270-018

161



STATE OF FLORIDA
 COUNTY OF PALM BEACH
 This Plat was filed for record at _____
 M. this _____ day of _____ 19____
 and duly recorded in Plat Book No. _____
 on Page _____
 Dorothy H. Wilken, Clerk of the Circuit Court
 By _____ D.C.



P.O.C.
 WEST 1/4 CORNER OF
 SECTION 16/45/42

P.O.B.

WEST LINE OF SECTION 16/45/42
 ALSO WEST LINE OF ABERDEEN-PLAT NO. 2
 (PLAT BOOK 55, PAGES 11 THRU 22)

S 01°45'27" W 1106.71'

S 88°14'34" E 270.47'

S 88°14'34" E 327.33'
 249.88'

20' M. E.

R=165.00' Δ=78°24'43" L=253.18'

N 14°55'26" E 90.68'

20' M. E.

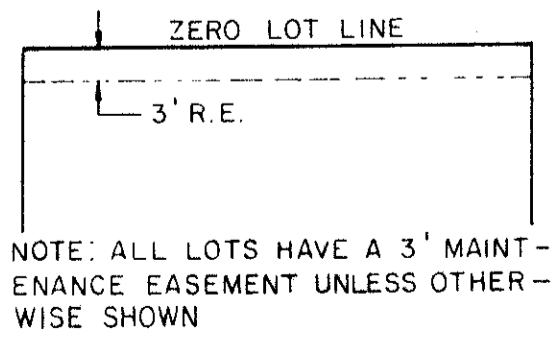
N 14°55'26" E 90.68'

Δ=95°41'06" L=125.25'

R=15.00'

TAZ 44Z

SUBDIVISION - ABERDEEN PL. 16
 BOOK 71 PAGE 159
 FLOOD ZONE B FLOOD MAP # 185A
 QUAD # 44 ZONING RS
 SE 80-153 ZIP CODE 33437
 PUD NAME ABERDEEN

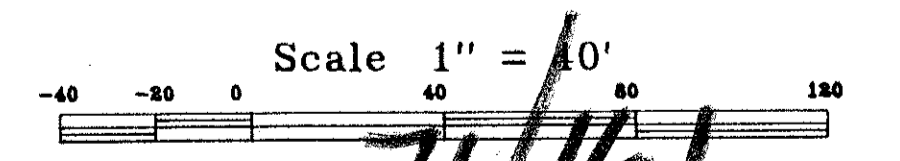


ABERDEEN-PLAT NO. 2
 (PLAT BOOK 55, PAGES 11 THRU 22)

ABERDEEN-PLAT NO. 2
 (PLAT BOOK 55, PAGES 11 THRU 22)

PET. 80-153
 ALLOC. #0001

0270-018



Landmark Surveying & Mapping Inc.
 1850 FOREST HILL BOULEVARD
 PH. (407)433-5405 SUITE 100 W.P.B. FLORIDA

ABERDEEN - PLAT NO. 16